



Coastrek Margaret River - 20km Event Map Guide

ROUTE INFORMATION

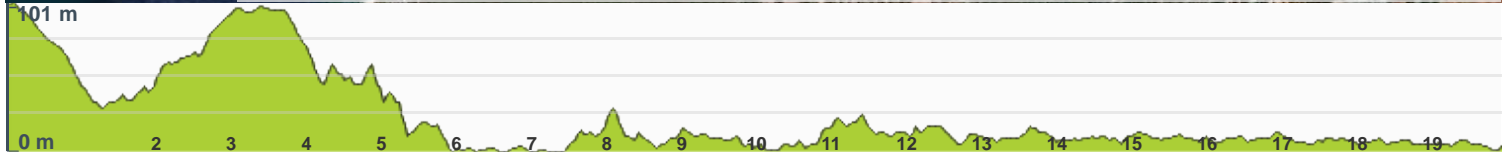
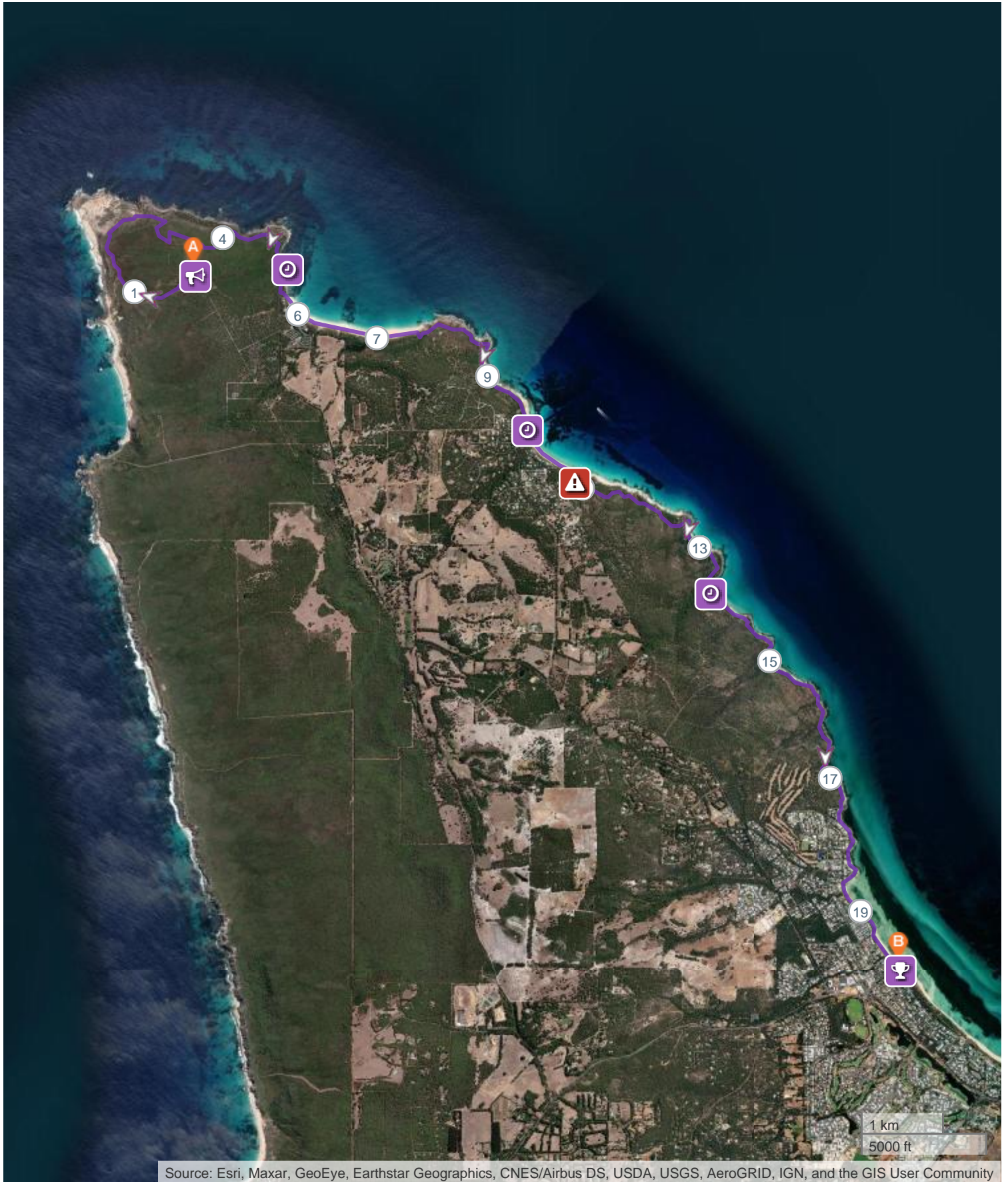


ROUTE LENGTH 19.923 km
ASCENT 252 m
DESCENT 346 m
HILLS ⬆️ 38.9% | ⬇️ 48.4% | ➡️ 12.7%
TERRAIN Mixed 🌲🌳
START **LAT:** -33.539148, **LNG:** 115.019568









NOTES

Coastrek Margaret River - 20km Event Map Guide



ROUTE DIRECTIONS

No	Km	Turn	Directions
1	0.000		 The 20km event starts here.
2	0.407	↗	Turn right to follow the dirt road
3	1.229	↗	Continue straight ahead
4	1.533		After the carpark continue on the trail
5	1.629	→	Turn right to continue on the trail
6	1.799	↙	Turn left then take a right
7	2.627	→	Follow the trail around to the right
8	2.859	↖	Continue straight ahead
9	3.028	←	Turn left
10	3.637	←	Turn left onto Bunker Bay Walk Trail
11	4.172	↗	CAUTION: Take it slow as you descend down the rocky limestone path. Watch every step!
12	4.819	↙	Turn sharp left
13	5.360		 Bunker Bay Kiss Stop! Bunker Bay Rd, Bunker Bay ± 14.5km to go Site closes: 3:45pm Toilets, water, first aid
14	5.376	↖	Depart the Luv Stop & follow Bunker Bay Road.
15	5.695	↖	Turn left through the gate towards Bunker Bay Beach
16	5.783		Follow Bunker Bay Beach for approx 1.75km
17	7.532	→	Follow the trail up at the end of the beach, then turn left towards Rocky Point.
18	7.718	↖	This section of the trail can be tricky to find the path. Keep an eye out for the marker posts & arrows and use caution when crossing the granite rocks as they can be slippery when wet.
19	8.875		Follow the trail towards Eagle Bay
20	9.884	↖	 Eagle Bay Luv Stop ! Fern Rd, Eagle Bay Beach ± 10km to go Site closes: 3:30pm Toilets, water, coffee, health services, first aid, snacks, timing point
21	9.904	↗	Depart the Luv Stop & head down to Eagle Bay Beach.
22	9.921	↗	Follow Eagle Bay Beach for about 800m.. look for the Baudin Memorial in the distance!
23	10.740	→	Exit the beach & head towards Eagle Bay - Meelup Rd.
24	10.777		Carefully cross Eagle Bay-Meelup Rd & head into the Meelup Regional Park.
25	10.855	←	Turn left & follow the trail

No	Km	Turn	Directions
26	10.868		 <p>CAUTION: You'll pass two Dieback boot cleaning stations. You must clean your footwear to remove any soil which may contain dieback spores to reduce the risk of spreading Phytophthora cinnamomic.</p>
27	12.563	↗	Turn right & head towards Eagle Bay-Meelup Rd.
28	12.590		Carefully cross Eagle Bay-Meelup Rd
29	12.614	→	Walk through the Point Piquet carpark, then turn right & follow the trail for about 1km towards Meelup Beach.
30	13.748		 <p>Meelup Beach Kiss Stop! Eagle Bay-Meelup Rd, Meelup Beach Picnic Ground ±6.2km to go Site closes: 5pm Toilets, water, snacks, first aid</p>
31	13.791		Depart the Kiss Stop continuing the carpark and onto the Meelup-Dunsborough trail.
32	17.473	→	Exit the trail at Hurford Street, head straight ahead towards Bay View Crescent
33	18.007		Continue on the trail past the Dunsborough Boat Ramp, then playground.
34	19.923		 <p>Woohoo! You've made it to the Finish! Site closes: 7pm Toilets, water, food truck, first aid</p>